

## HEADTEACHER MESSAGE

"There are no such things as limits to growth, because there are no limits to the human capacity for intelligence, imagination and wonder"

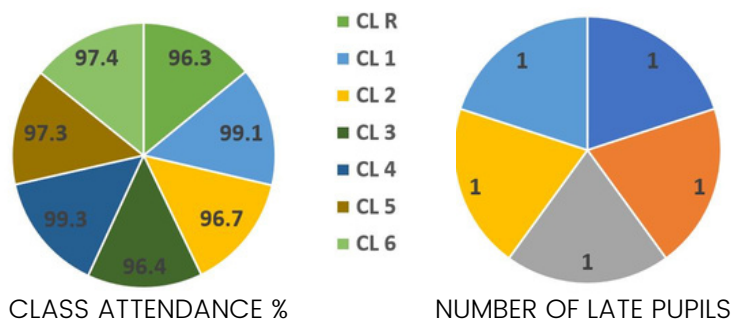
Welcome back to the Spring term. I hope you all had a wonderful, rested break. The children have settled back into school life exceptionally well. On Monday we talked about lifting the lid on our limits and how we can focus ourselves, talk and support one another to become the best version of ourselves. This certainly has been the case in Reception this week where our youngest children have been looking at the very hungry caterpillar. The children spent some time outside becoming beautiful butterflies. It has been a joy to talk to children this week about their learning experiences and what they are aiming to improve on this academic year. Their grit and determination to be successful is infectious and is met with lots of support from one another. What a great first week back!

Have a lovely weekend.

Mrs I Wilson  
Headteacher

## ATTENDANCE STATS

Overall attendance this week for the whole school 97.5 %



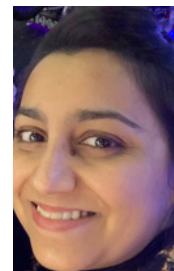
SCAN THE QR CODES TO VISIT OUR  
PAGES

## SPOTLIGHT ON PSHE

Hi,

I am Mrs Esa and I am PSHE lead in school.

At BGL, our PSHE curriculum feeds into everything that we do - Our vision, values and behaviour! In school, we have been looking more closely at behaviour for learning and what this specifically looks like. Classes have devised behaviour targets to help them to be even better learners and thrive in the world. For example, year 1 have looked at "Things that might distract us during learning time". They then thought about strategies they could use to manage distractions. This term, in My Happy Mind, all classes will be looking at appreciate. We will consider how an "attitude of gratitude" can have a positive impact on our outlook. I will be on the school gate on Wednesday and Thursday next week so please do come and find me if you have any PSHE related questions.





## FOOD ALLERGIES



It is important that any food allergies your child has are notified to Dolce and school via Schoolgrid. Please ensure Schoolgrid is up to date with this information. Thank you

## LOST PROPERTY AREA

Please can parents/carers be aware that the lost property area by Reception classroom is for lost property only. Please do not leave unwanted uniform there. Thank you.



## KS2 MUSIC CONCERT

The Music Concert for KS2 takes place on Thursday 18th January. Please indicate your attendance on School Spider.

## EDUCATIONAL VISITS

A reminder to complete the consent form and make payment on Spider for the Y1 visit to Blackpool Zoo taking place on 25th January and the Y5 visit to London in February.



## BIRTHDAY SHOUT OUT!

Happy birthday to the children who have been celebrating this week and a big 'THANK YOU' to:

Umar E in Reception for 'Elmer' by David McKee and ...

Millie M in Y5 for the books 'The Pumpkin Project' by Katie Smith and 'The Castle of Adventure' by Enid Blyton



## BEHAVIOUR FOCUS

Happy New Year all! I hope you had a lovely break and are looking forward to an amazing year. This week, I have been really impressed with the behaviour across school coming back from 2 weeks off. I have seen children walking sensibly in corridors and playing kindly outside as well as consistently following our school rules.

I would like to take this opportunity to remind everyone about our digital recognition board. If your child comes home with a slip and a QR code, you can simply scan this to see their amazing work completed for that day. It is brilliant to see all the fantastic things going on in school.

Miss Pass

UPCOMING DIARY  
DATES

Tuesday 16th	Y5 Mrs Esa's Debate Club At lunchtime for this week only due to Mrs Esa attending the Sports Event.
Tuesday 16th	Y5/Y6 Lostock Hall Sports Activities
Thursday 18th	Y6 Miss Passerini's SATs Revision Club 3.00pm - 4.00pm
Thursday 18th	KS2 Music Concert 8.40am & 6.00pm
Friday 19th	Let's Go Sing Lunchtime Club
Friday 19th	Y5/Y6 talk 'Age of Criminality'
Friday 19th	South Ribble Fun Fitness Club 3.00 - 4.00pm
Tuesday 23rd	Mrs Esa's Debate Club 3.00 - 4.00pm
Thursday 25th	KS2 'Value's Day'
Thursday 25th	Y1 visit to Blackpool Zoo
Friday 26th	KS1 Values Day
Friday 26th	Let's Go Sing Lunchtime Club



## DOLCE

We hope that your children enjoy the new menu from January. The Dolce food services team has included some new dishes like katsu curry along with firm favourites such as chicken dippers and macaroni cheese.

The new menu also alternates daily between jacket potato and sandwiches, with a choice of fillings, accompanied by a daily vegetarian option.

Feedback is always welcome. It helps us tailor the dishes on our menus, along with ensuring that quality is maintained.

[Customercare@dolce.co.uk](mailto:Customercare@dolce.co.uk) is there to help with any questions or concerns you may have, as well as questions regarding Schoolgrid and payments.



## TAKEHOME



Is an e-reader better  
than a book?

## In the news this week

A study from the University of Valencia, in Spain, found that print reading could boost skills by six to eight times more than digital reading, for example, on an e-reader or tablet. The study, published in the Review of Educational Research, also found that while there is a negative relationship between digital reading and comprehension for primary school pupils, the relationship turns positive for secondary school-aged pupils.

## Things to talk about at home ...

- > Do you enjoy reading? If so, what type of books?
- > Talk to someone at home about the types of books they like to read.
- > Do you think you would prefer to read printed books, or books on an e-reader?
- > Do you think that one day, e-readers will replace books?

Please note any interesting thoughts or comments

## WET PLAYTIME TOYS

Mrs Abbott, one of our Lunchtime assistants, has asked if your children have any good quality toys that they no longer play with and can be donated to school. These will be kept for the children to play with during wet playtimes when they are unable to play outside. Toys such as dolls' houses, toy garages, cars, building bricks, etc. will be extremely welcome. Thank you.



Our smartest lining up classes this week are...

RECEPTION

YEAR 4

